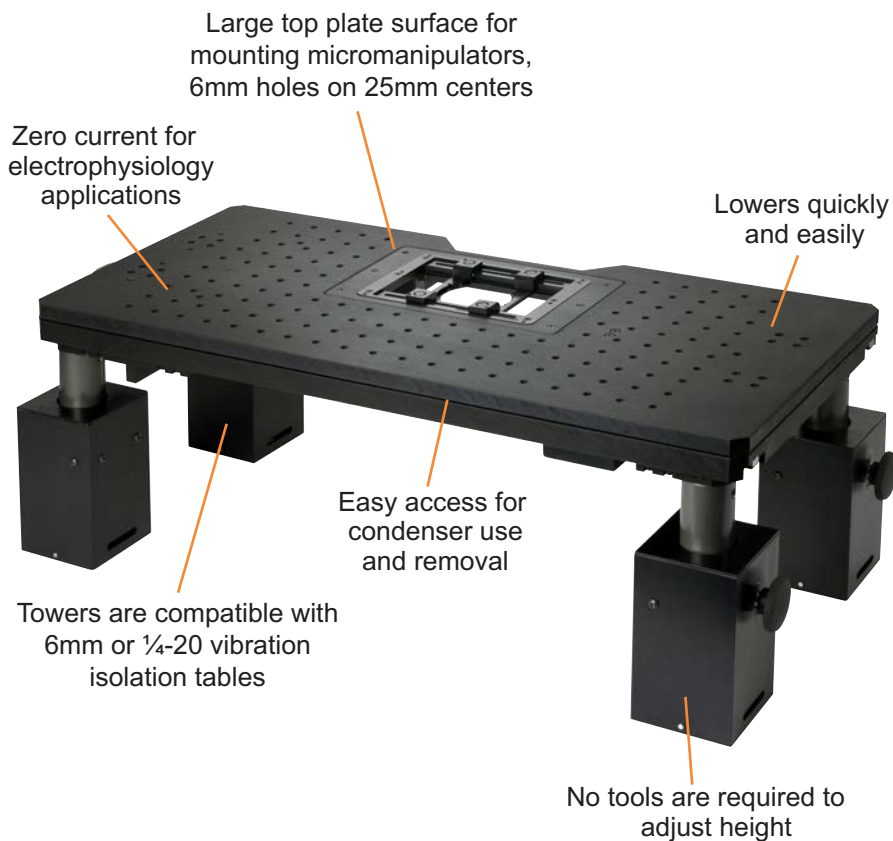


# Motorized Z Deck Quick Adjust Platform System

## For Nikon FN1/Ni, Olympus BX51WI/BX61WI and Zeiss Axio Examiner Microscopes



Prior Scientific's Z Deck Quick Adjust Platform enables users to increase their productivity by allowing them to image multiple areas of interest with speed and precision.

### ZDeck Quick Adjust Platform features:

- Pneumatic piston towers which make raising and lowering the Z Deck virtually effortless.
- No tools are required to adjust the height.
- Change between thin sample and whole animal imaging height in seconds.
- ProScan™III controller and CS200XY joystick provide ultra fine XY stage control.
- A completely integrated XY stage which provides a lower profile with a thinner cross section allowing for large samples.
- Oversized top surface for mounting additional micromanipulators and stereotaxic instruments.
- Fully encoder upgradable.
- Large sample area for mounting existing, heating, cooling, perfusion and incubation chambers.
- Compatible with most imaging software.

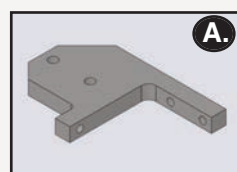
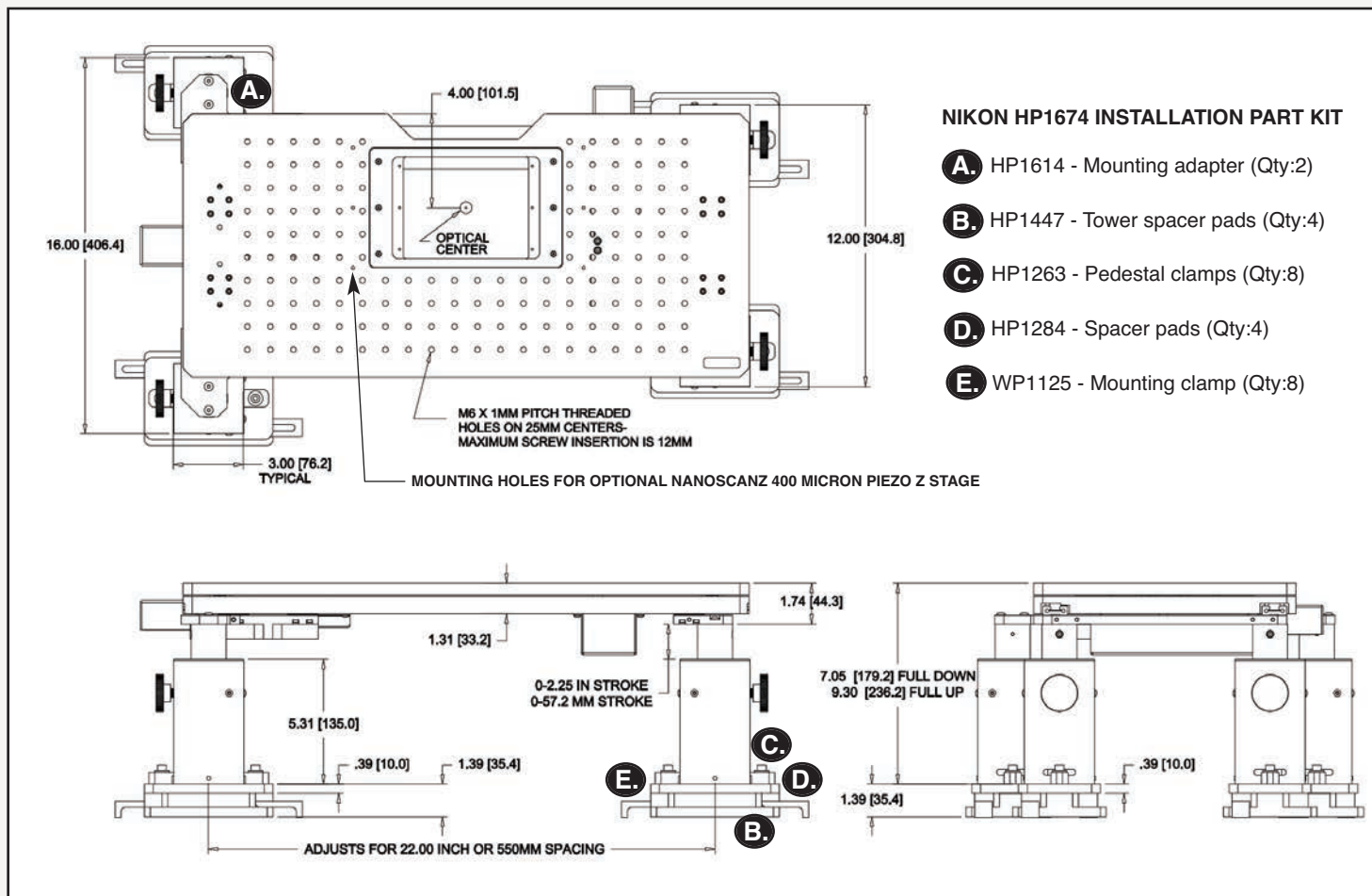
### Features:

- Image multiple areas of interest with speed and precision
- Lowers quickly & easily to provide access for loading and unloading samples
- No tools are required to adjust height
- Changing between thin sample and whole animal imaging can be accomplished in seconds
- Pneumatic pistons make raising and lowering the unit effortless
- Provides sub micron repeatability and smooth movement
- Compatible with 6mm or 1/4-20 vibration isolation tables
- Pillar spaces allow for Koehler illumination at a range of focus heights
- Optional encoders for highest precision available
- Compatible with multi-photon setup configurations

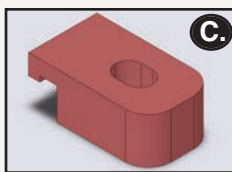
# Motorized Z Deck Quick Adjust Platform System

For Nikon FN1/Ni Microscopes

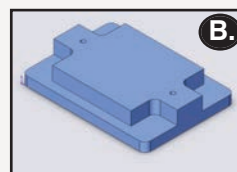
## Outline Drawing and Part Number Information



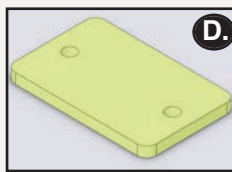
**A. Mounting Adapter**  
 Part Number: HP1614  
 Quantity: 2



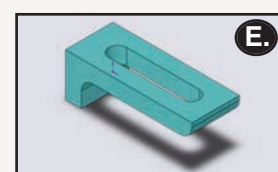
**C. Pedestal Clamps**  
 Part Number: HP1263  
 Quantity: 8



**B. Tower Spacer Pad**  
 Part Number: HP1447  
 Quantity: 4



**D. Spacer Pads**  
 Part Number: HP1284  
 Quantity: 4



**E. Mounting Clamps**  
 Part Number: WP1125  
 Quantity: 8

## Worldwide distribution

**Prior Scientific Ltd**  
 3-4 Fielding Industrial  
 Estate, Wilbraham Road,  
 Fulbourn, Cambridge,  
 CB21 5ET, UK

**Prior Scientific**  
 80 Reservoir Park Drive  
 Rockland, MA 02370  
 USA

**Prior Scientific Gmbh**  
 Hans-Knöll-Str. 6  
 D-07745  
 Jena, Germany

**Prior Scientific KK**  
 Kayabacho 3rd Nagaoka  
 Bldg 10F, 2-7-10,  
 Nihonbashi Kayabacho,  
 Chuo-Ku, Tokyo,  
 103-0025, Japan

**Prior Scientific China**  
 Prior Scientific  
 Instruments (Suzhou) Ltd.  
 509 Tayun Plaza,  
 188 Tayun Road  
 Suzhou, 215000 China

## Motorized Z Deck Quick Adjust Platform System

For Nikon FN1/Ni Microscopes

### Specifications

Specification	Description
Z Deck travel	57mm
Vibration table compatibility	1/4-20 or 6mm
XY travel	65mm x 65mm
XY resolution	40 nanometers
XY Speed	15mm/sec
Spacers provided	Four pillar spacers, four one inch spacers
ProScan controller power	Universal external power supply. Input 100-240V, 50/60Hz, Max 1.6A
ProScan computer interface	RS232/USB
ProScan communication protocol	8 bit word, 1 stop bit, no parity, no handshake

### Adjustable Rise Platform Hardware Kit

Quantity	Description
8	1/4x20x1.5" screw
10	1/4x20x1.0" screw
1	3/16" allen wrench
8	.75mm thick M5 washer
1	5mm hex wrench
1	3mm allen wrench
10	1/4 standard flat washer
8	M4 x 10 screw
4	M4 x 30 screw
8	M5 x 14 screw
10	M6 x 25 screw
8	M6 x 35 screw

### ZDN12MN Complete System Part List

Part Number	Description
ZDM1M2	Motorized Z Deck stage
HP1266	Hardware installation kit
HP1674	Nikon installation parts kit
H31XYZEF	ProScan controller
CS200XY	ProScan joystick
H473UP	Universal specimen holder
H230	Solid aluminum plate

### Ordering Information

Part Number	Description
<b>ZDN12MN for Nikon FN1/Ni</b>	Prior high precision motorized Z Deck system complete with Prior Z Deck, motorized ProScan XY stage, ProScan III controller, CS200XY joystick, universal holder, solid aluminum plate and pillar spacers.
<b>ZDN12ME for Nikon FN1/Ni</b>	Prior high precision motorized Z Deck system complete with Prior Z Deck, motorized ProScan XY stage with 100 nanometer linear scales, ProScan III controller, CS200XY joystick, universal holder, solid aluminum plate and pillar spacers.

## Worldwide distribution

**Prior Scientific Ltd**  
3-4 Fielding Industrial  
Estate, Wilbraham Road,  
Fulbourn, Cambridge,  
CB21 5ET, UK

**Prior Scientific**  
80 Reservoir Park Drive  
Rockland, MA 02370  
USA

**Prior Scientific Gmbh**  
Hans-Knöll-Str. 6  
D-07745  
Jena, Germany

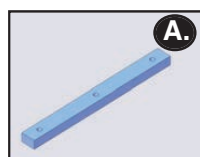
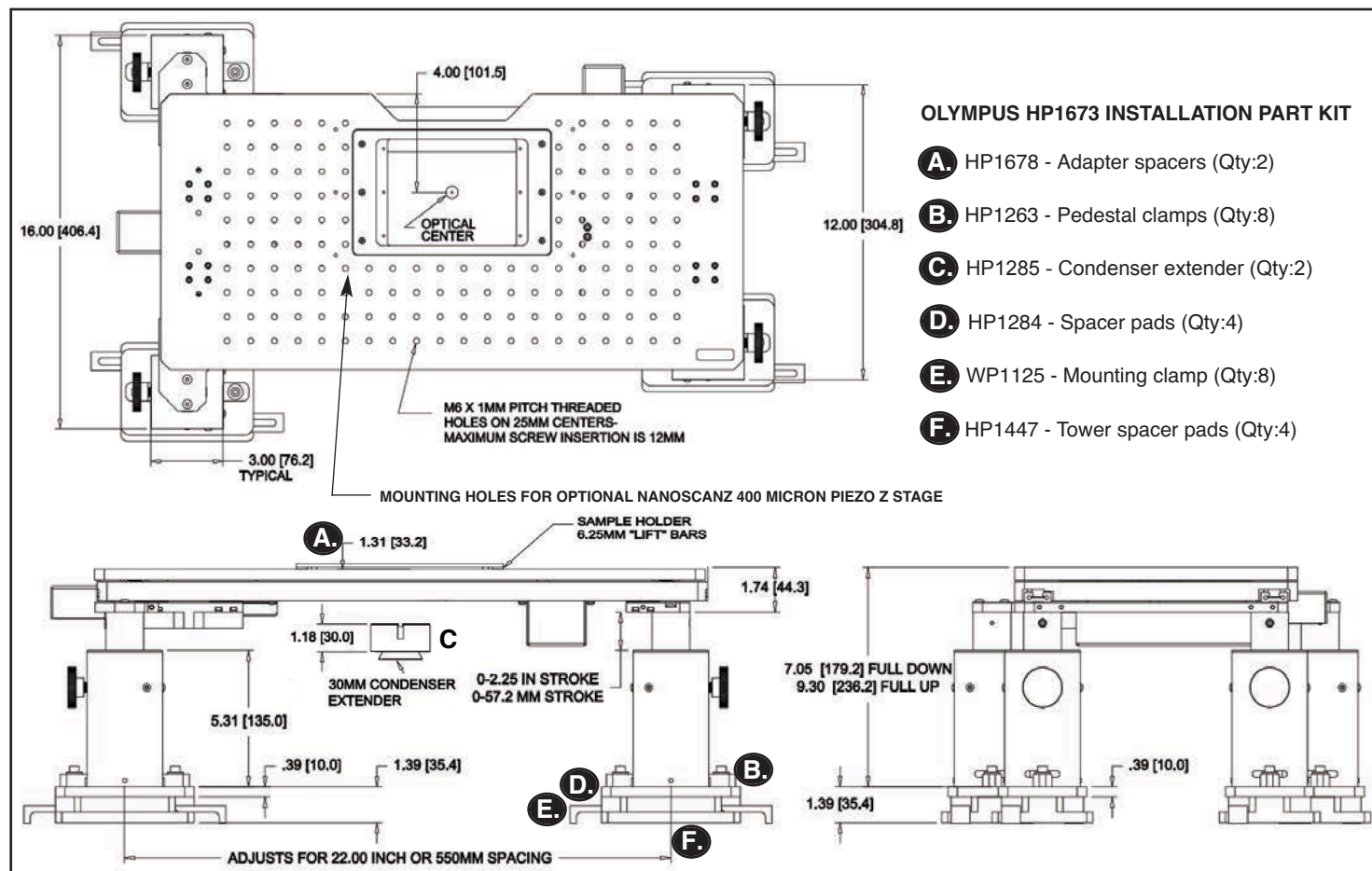
**Prior Scientific KK**  
Kayabacho 3rd Nagaoka  
Bldg 10F, 2-7-10,  
Nihonbashi Kayabacho,  
Chuo-Ku, Tokyo,  
103-0025, Japan

**Prior Scientific China**  
Prior Scientific  
Instruments (Suzhou) Ltd.  
509 Tayun Plaza,  
188 Tayun Road  
Suzhou, 215000 China

# Motorized Z Deck Quick Adjust Platform System

For Olympus BX51WI/BX61WI Microscopes

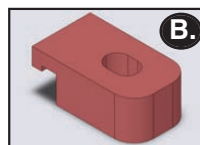
## Outline Drawing and Part Number Information



**A.**

### Adapter Spacers

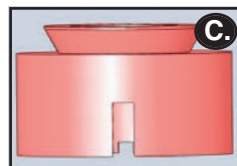
Part Number:  
HP1678  
Quantity: 2



**B.**

### Pedestal Clamps

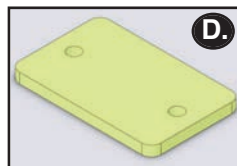
Part Number:  
HP1263  
Quantity: 8



**C.**

### Condenser Extender

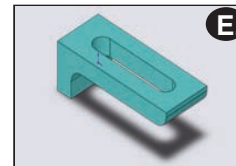
Part Number:  
HP1285  
Quantity: 2



**D.**

### Spacer Pads

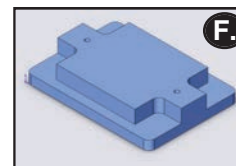
Part Number:  
HP1284  
Quantity: 4



**E.**

### Mounting Clamps

Part Number:  
WP1125  
Quantity: 8



**F.**

### Tower Spacer Pads

Part Number:  
HP1447  
Quantity: 4

## Worldwide distribution

**Prior Scientific Ltd**  
3-4 Fielding Industrial  
Estate, Wilbraham Road,  
Fulbourn, Cambridge,  
CB21 5ET, UK

**Prior Scientific**  
80 Reservoir Park Drive  
Rockland, MA 02370  
USA

**Prior Scientific Gmbh**  
Hans-Knöll-Str. 6  
D-07745  
Jena, Germany

**Prior Scientific KK**  
Kayabacho 3rd Nagaoka  
Bldg 10F, 2-7-10,  
Nihonbashi Kayabacho,  
Chuo-Ku, Tokyo,  
103-0025, Japan

**Prior Scientific China**  
Prior Scientific  
Instruments (Suzhou) Ltd.  
509 Tayun Plaza,  
188 Tayun Road  
Suzhou, 215000 China

## Motorized Z Deck Quick Adjust Platform System

For Olympus BX51WI/BX61WI Microscopes

### Specifications

Specification	Description
Z Deck travel	57mm
Vibration table compatibility	1/4-20 or 6mm
XY travel	65mm x 65mm
XY resolution	40 nanometers
XY Speed	15mm/sec
Spacers provided	One condenser, four pillar spacers, two adapter spacers
ProScan controller power	Universal external power supply. Input 100-240V, 50/60Hz, Max 1.6A
ProScan computer interface	RS232/USB
ProScan communication protocol	8 bit word, 1 stop bit, no parity, no handshake

### Adjustable Rise Platform Hardware Kit

Quantity	Description
8	1/4x20x1.5" screw
10	1/4x20x1.0" screw
1	3/16" allen wrench
8	.75mm thick M5 washer
1	5mm hex wrench
1	3mm allen wrench
10	1/4 standard flat washer
8	M4 x 10 screw
4	M4 x 30 screw
8	M5 x 14 screw
10	M6 x 25 screw
8	M6 x 35 screw

### ZDP12MN Complete System Part List

Part Number	Description
ZDM1M2	Motorized Z Deck stage
HP1266	Hardware installation kit
HP1673	Olympus installation parts kit
H31XYZEF	ProScan controller
CS200XY	ProScan joystick
H473UP	Universal specimen holder
H230	Solid aluminum plate

### Ordering Information

Part Number	Description
<b>ZDP12MN for Olympus BX51WI/61WI</b>	Prior high precision motorized Z Deck system complete with Prior Z Deck, motorized ProScan XY stage, ProScan III controller, CS200XY joystick, universal holder, solid aluminum plate, condenser spacer and four 10mm pillar spacers.
<b>ZDP12ME for Olympus BX51WI/61WI</b>	Prior high precision motorized Z Deck system complete with Prior Z Deck, motorized ProScan XY stage with 100 nanometer linear scales, ProScan III controller, CS200XY joystick, universal holder, solid aluminum plate, condenser spacer and four 10mm pillar spacers.

## Worldwide distribution

**Prior Scientific Ltd**  
3-4 Fielding Industrial  
Estate, Wilbraham Road,  
Fulbourn, Cambridge,  
CB21 5ET, UK

**Prior Scientific**  
80 Reservoir Park Drive  
Rockland, MA 02370  
USA

**Prior Scientific Gmbh**  
Hans-Knöll-Str. 6  
D-07745  
Jena, Germany

**Prior Scientific KK**  
Kayabacho 3rd Nagaoka  
Bldg 10F, 2-7-10,  
Nihonbashi Kayabacho,  
Chuo-Ku, Tokyo,  
103-0025, Japan

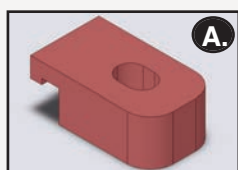
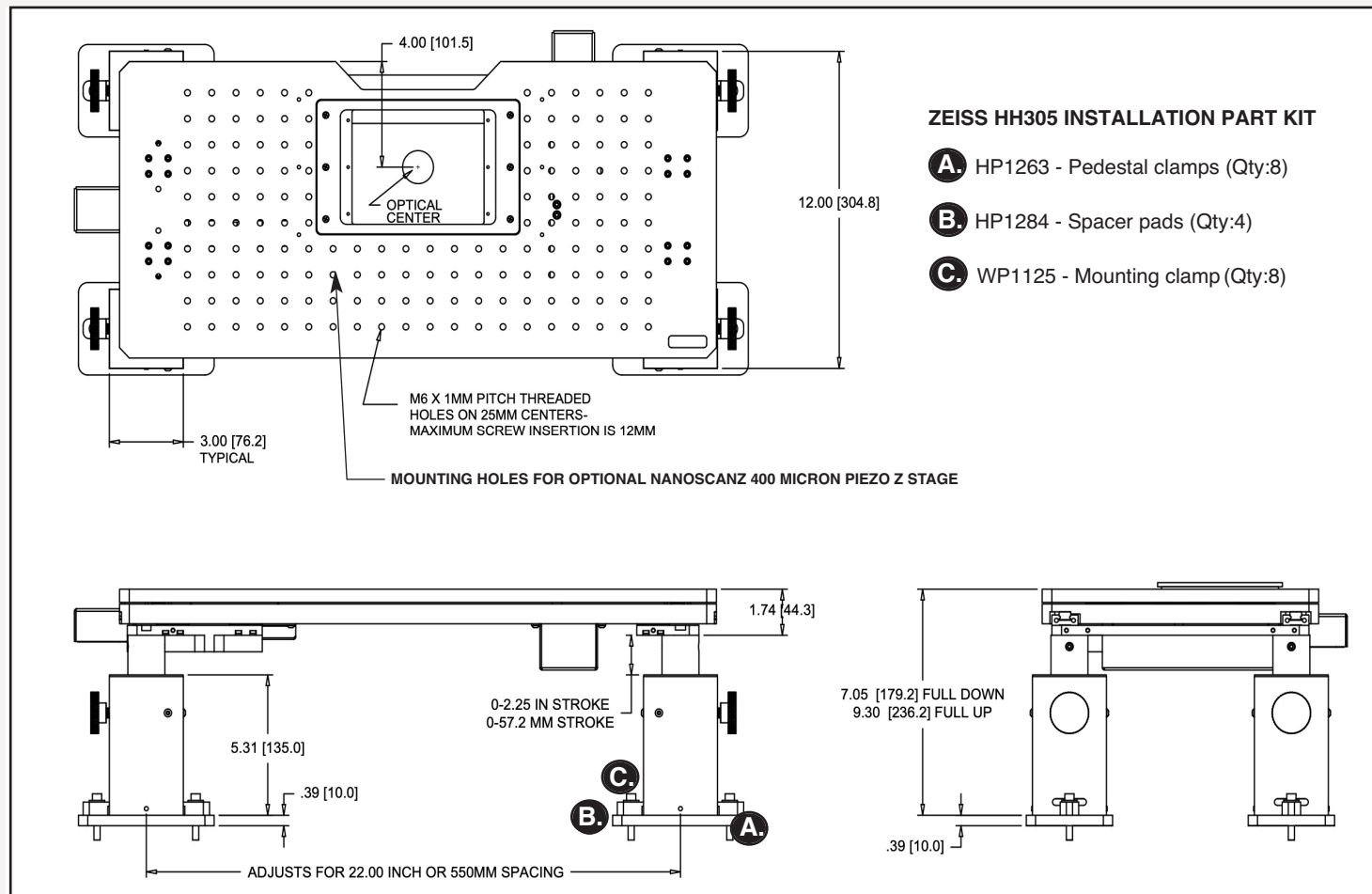
**Prior Scientific China**  
Prior Scientific  
Instruments (Suzhou) Ltd.  
509 Tayun Plaza,  
188 Tayun Road  
Suzhou, 215000 China



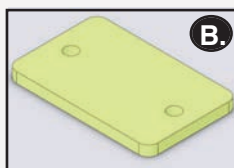
## Motorized Z Deck Quick Adjust Platform System

For Zeiss Axio Examiner Microscopes

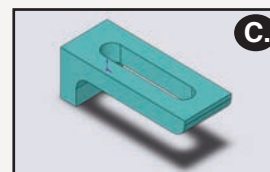
### Outline Drawing and Part Number Information



**Pedestal Clamps**  
Part Number: HP1263  
Quantity: 8



**Spacer Pads**  
Part Number: HP1284  
Quantity: 4



**Mounting Clamps**  
Part Number: WP1125  
Quantity: 8

### Worldwide distribution

**Prior Scientific Ltd**  
3-4 Fielding Industrial  
Estate, Wilbraham Road,  
Fulbourn, Cambridge,  
CB21 5ET, UK

**Prior Scientific**  
80 Reservoir Park Drive  
Rockland, MA 02370  
USA

**Prior Scientific Gmbh**  
Hans-Knöll-Str. 6  
D-07745  
Jena, Germany

**Prior Scientific KK**  
Kayabacho 3rd Nagaoka  
Bldg 10F, 2-7-10,  
Nihonbashi Kayabacho,  
Chuo-Ku, Tokyo,  
103-0025, Japan

**Prior Scientific China**  
Prior Scientific  
Instruments (Suzhou) Ltd.  
509 Tayun Plaza,  
188 Tayun Road  
Suzhou, 215000 China

## Motorized Z Deck Quick Adjust Platform System

For Zeiss Axio Examiner Microscopes

### Specifications

Specification	Description
Z Deck travel	57mm
Vibration table compatibility	1/4-20 or 6mm
XY travel	65mm x 65mm
XY resolution	40 nanometers
XY Speed	15mm/sec
Spacers provided	Four 10mm pillar spacers, four one inch spacers
ProScan controller power	Universal external power supply. Input 100-240V, 50/60Hz, Max 1.6A
ProScan computer interface	RS232/USB
ProScan communication protocol	8 bit word, 1 stop bit, no parity, no handshake

### Adjustable Rise Platform Hardware Kit

Quantity	Description
8	1/4x20x1.5" screw
10	1/4x20x1.0" screw
1	3/16" allen wrench
8	.75mm thick M5 washer
1	5mm hex wrench
1	3mm allen wrench
10	1/4 standard flat washer
8	M4 x 10 screw
4	M4 x 30 screw
8	M5 x 14 screw
10	M6 x 25 screw
8	M6 x 35 screw

### ZDZ12MN Complete System Part List

Part Number	Description
ZDM1M2	Motorized Z Deck stage
HP1266	Hardware installation kit
HH305	Zeiss installation parts kit
H31XYZEF	ProScan controller
CS200XY	ProScan joystick
H473UP	Universal specimen holder
H230	Solid aluminum plate

### Ordering Information

Part Number	Description
<b>ZDZ12MN for Zeiss Axio Examiner</b>	Prior high precision motorized Z Deck system complete with Prior Z Deck, motorized ProScan XY stage, ProScan III controller, CS200XY joystick, universal holder, solid aluminum plate and pillar spacers.
<b>ZDZ12ME for Zeiss Axio Examiner</b>	Prior high precision motorized Z Deck system complete with Prior Z Deck, motorized ProScan XY stage with 100 nanometer linear scales, ProScan III controller, CS200XY joystick, universal holder, solid aluminum plate and pillar spacers.

## Worldwide distribution

**Prior Scientific Ltd**  
3-4 Fielding Industrial  
Estate, Wilbraham Road,  
Fulbourn, Cambridge,  
CB21 5ET, UK

**Prior Scientific**  
80 Reservoir Park Drive  
Rockland, MA 02370  
USA

**Prior Scientific GmbH**  
Hans-Knöll-Str. 6  
D-07745  
Jena, Germany

**Prior Scientific KK**  
Kayabacho 3rd Nagaoka  
Bldg 10F, 2-7-10,  
Nihonbashi Kayabacho,  
Chuo-Ku, Tokyo,  
103-0025, Japan

**Prior Scientific China**  
Prior Scientific  
Instruments (Suzhou) Ltd.  
509 Tayun Plaza,  
188 Tayun Road  
Suzhou, 215000 China